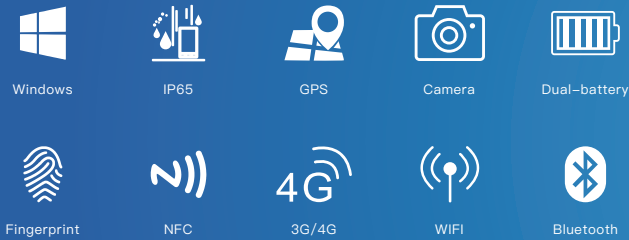


Fully Rugged Notebook

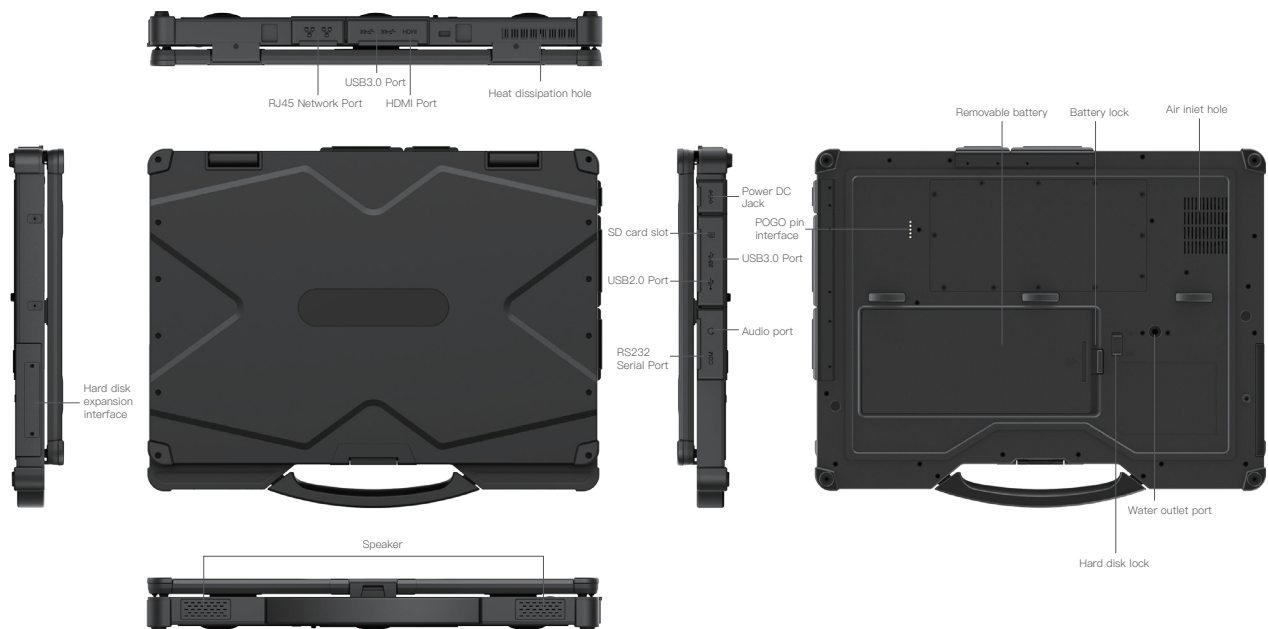
EM-X14U



Functions

- Support for Win 7, Win 10 system
- Intel® Core™ i5-8250U/i7-8550U, greatly improved performance
- The fuselage is equipped with dual battery design, and the endurance is increased to 6-8 hours
- IP65 high protection level, in accordance with MIL-STD-810G
- Support GPS, Optional Beidou, more accurate positioning
- Support 1920x1080 FHD, optional with Corning gorilla screen and sunshine visual screen
- Support rich expansion slot and fingerprint design, can be applied to various complex industry needs and expand demand

Product Six Views



Specification Parameter

Basic parameters	
Dimension	363.2 x 287.4 x 42.1mm
Weight	device unit 2850g
Device Color	black, silver
LCD	14 inch FHD 16:9, 1920x1080, 700nits
Touch Panel	Optional 10 point G+G capacitive touch screen Corning® Gorilla® Glass
Camera	Front 2.0MP
I/O	HDMI x 1, POGO 5pin x 1, USB 2.0 Type-A x 1, USB 3.0 Type-A x 3, SIM Card x 1, SD Card x 1, DB9 RS232 x 1, RJ45 x 2, Φ3.5mm standard earphone jack x 1, DC 19V 3.42A x 1
Power	AC100V ~ 240V, Output DC 19V/3.42A/65W

Battery (Built-in)	
Capacity	7.4V/1750mAh
Type	Built in Li_polyment,battery loadable
Endurance	0.5hrs (Default 50% volume, default 200 nit, Play 720P HD video)

Battery (Hot-swappable)	
Capacity	7.4V/6300mAh
Type	Li_polyment, removeable battery
Endurance	8.5hrs (Default 50% volume, default 200 nit, Play 720P HD video)

Performance parameter	
CPU	Intel® Core™ i5-8250U/i7-8550U
OS	Windows 7/Windows 10
RAM	8GB/16GB
ROM	256GB/512GB

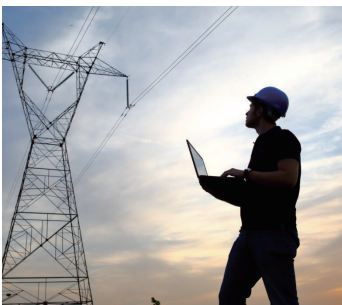
Communication	
WiFi	WiFi 802.11 a/b/g/n/ac (2.4G+5.8G)
Bluetooth	BT4.2
3G/4G (Optional)	LTE FDD B1/B3/B5/B7/B8/B20/B28A LTE TDD B38/B40/B41 WCDMA B1/B2/B5/B8 GSM B2/B3/B5/B8
GNSS	Support GPS, Optional GPS+Beidou

Reliability	
Operate Temperature	-20 °C ~ 60 °C
Store Temperature	-30 °C ~ 70 °C
Humidity	95% Non-Condensing
Rugged Feature	IP65 certified, MIL-STD-810G certified
Drop Height	1.22m

Data Collection	
Fingerprint	SPI fingerprint (power on login)
NFC	Optional, 13.56MHz, ISO/IEC 14443A/B, ISO/IEC 15693, ISO/IEC 18092

Application Range

Various modules and accessories can be selected to meet customers' application in various industries.



Power Maintenance



Equipment Testing



Automobile Manufacturing



Public Security